

CURY

VILLAGER

1999

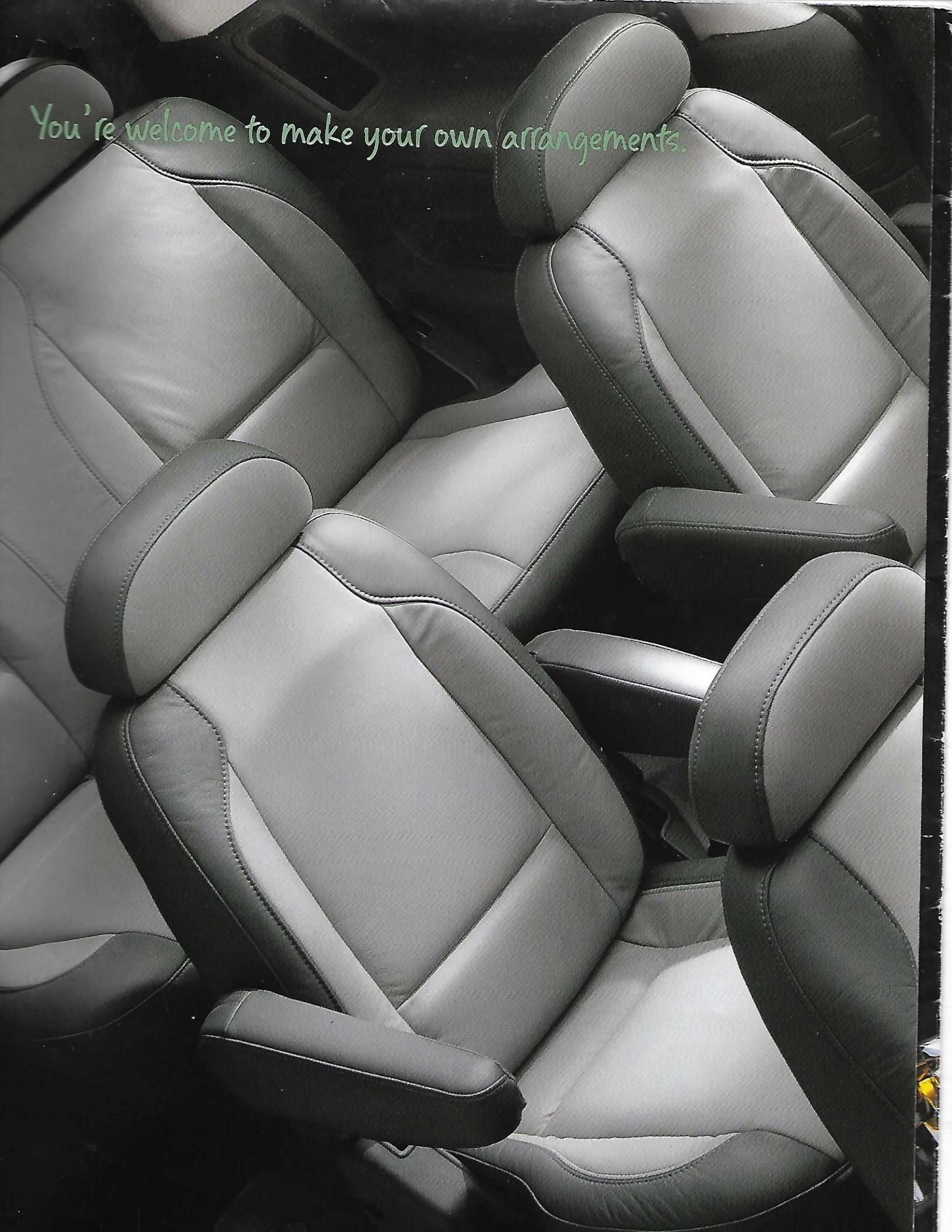








You're welcome to make your own arrangements.





Those who can, do.

and you're definitely a doer. In fact,
your motto could be: Life is not a
spectator sport. Which explains your
on-the-move lifestyle. There's practically
nothing you don't do. And you don't
end to the activities you're involved
in. Fortunately there's a vehicle that can
keep up with you. Mercury Villager.
This year, it's been restyled inside and
out. Not only does it have more interior
space, but it also has the kind of space
you'll find readily adaptable. With
standard features like a driver's side
sliding door, an In-Track™ rear sliding
system and lots of storage
compartments. And, you get all that
performance with a smooth, car-like ride.



If it's a question of flexibility

an interior that's extremely flexible.
e ultimate in convenience, equip your
er with the available TravelNote® digital
recorder with HomeLink® Universal
e Door Opener. HomeLink can operate
gate, garage door and more. A great
ome to you while you're driving?
Note records up to three minutes'
of messages.



er seats are newly redesigned. Sport
ate models are available with leather
g surfaces. And there's a handy storage
hind the third-row seat.



rate fan control is available for rear
gers. Also available is the Personal
System (included with Super Sound
a) which allows rear passengers to
to a CD, for example through

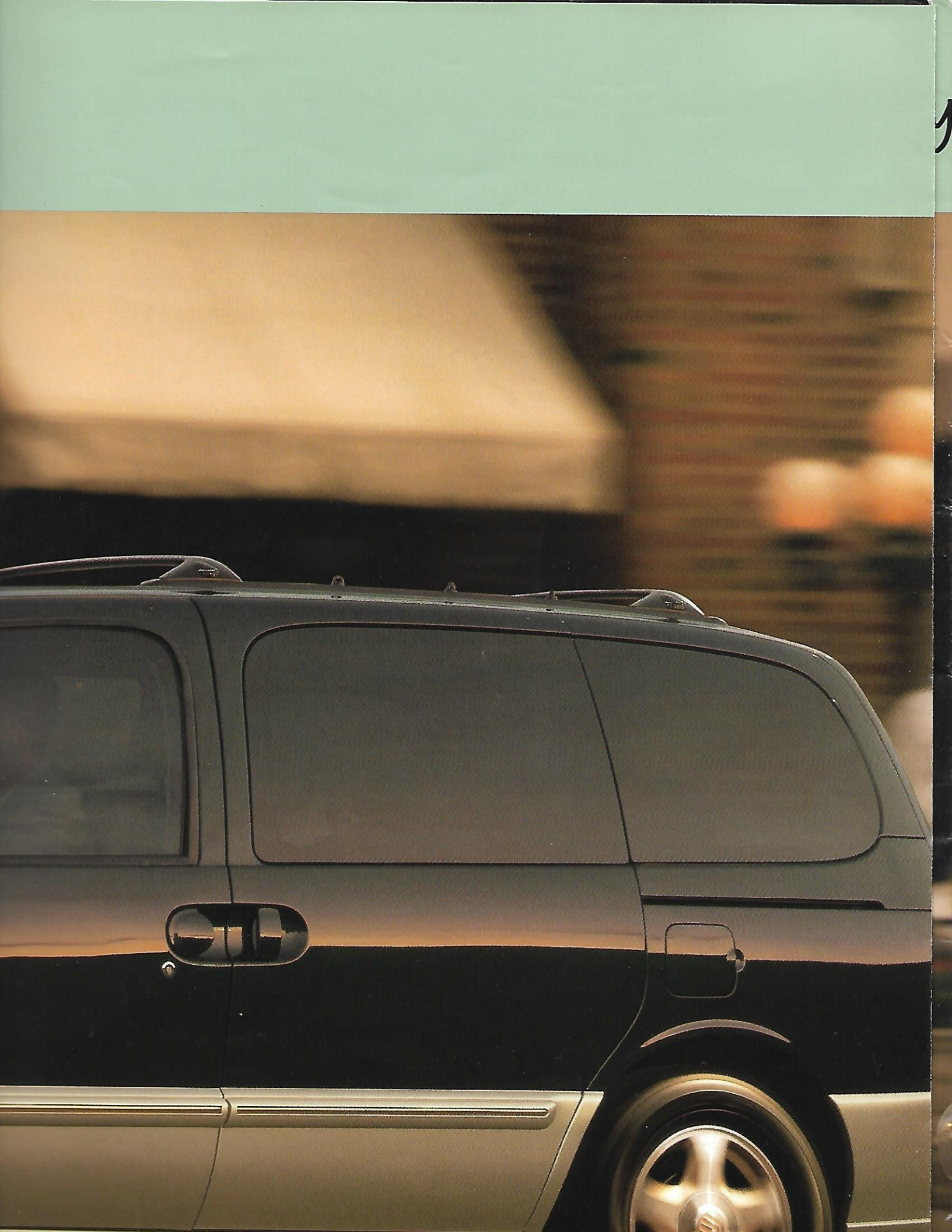


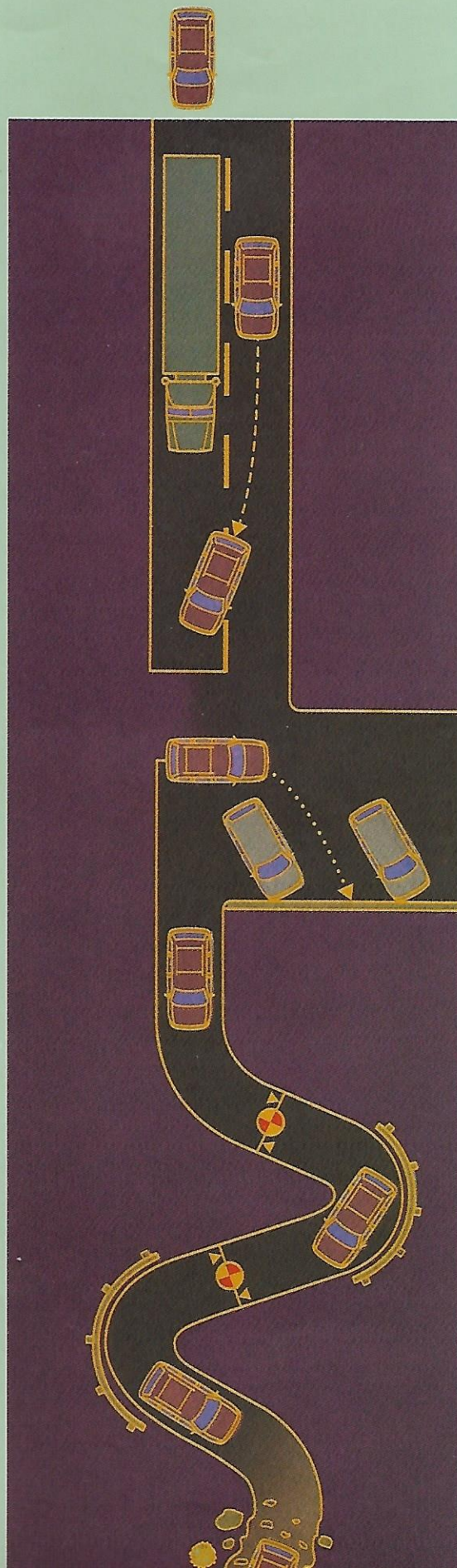
phones*, while front passengers listen to
ize.



's your answer.







One thing that makes Villager so enjoyable to drive is its smooth car-like ride and handling. The SOHC V-6 engine has been refined this year. It's been upgraded to 3.3 liters to produce more power and torque. It's also more fuel efficient and provides increased smoothness, reliability and durability.[†]

Front-wheel drive, a four-speed electronically controlled automatic overdrive transaxle and power rack-and-pinion steering make Villager a rare pleasure to drive.

Improvements to the suspension system give you better ride comfort along with great handling. Up front you'll find MacPherson struts and a stabilizer bar which help provide control when cornering.

And, in back, the retuned suspension includes single-leaf springs for improved ride and handling.

Take a Villager out for a spin and see if you don't say, "This sure doesn't feel like a minivan."

ager comes with all sorts of storage

here's even extra storage space under

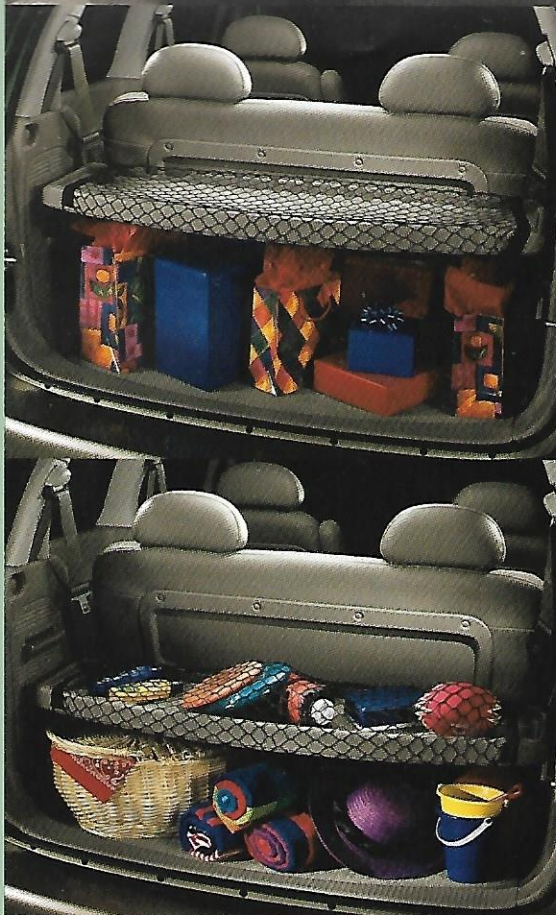
passenger seat.

adjustable parcel shelf is standard on

Sport and Estate models. Lock it

positions and it can hold up to 30

of stuff



full wheel cover



5-spoke aluminum wheel



deluxe aluminum wheel



16" machined aluminum wheel



16" machined aluminum wheel with gold painted pockets



ENGINE

Type	SOHC V-6
Displacement	3.3 liters
Horsepower (SAE net)	170 @ 4800 rpm
Torque (lbs.-ft. SAE net)	200 @ 2800 rpm
Fuel delivery	Sequential multi-port electronic fuel injection
Maximum towing capacity	3,500 lbs.

TRANSAXLE

Electronic 4-speed automatic overdrive w/overdrive lockout

CAPACITIES

Fuel tank	20.0 gals.
Oil (w/filter)	4.2 qts.
Seating capacity	7 passengers
Curb weight (Villager)	3,944 lbs.

STEERING

Power-assisted rack-and-pinion	
Curb-to-curb turning diameter	39.9 ft.

BRAKES

Power front disc/rear drum

SUSPENSION

Front—MacPherson gas-pressurized struts with front stabilizer bar
 Rear—Single-leaf suspension with gas-pressurized hydraulic shock absorbers
 Estate/Sport—Handling suspension includes rear stabilizer bar and modified front spring rates, front struts and rear shock absorbers

DIMENSIONS (IN INCHES)

Wheelbase	112.
Length	194.
Headroom, front/middle/rear	39.7/39.9/38.
Legroom, front/middle/rear	39.9/36.4/36.
Shoulder room, front/middle/rear	62.3/64.6/62.
Hiproom, front/middle/rear	56.5/64.9/49.
Cargo volume, behind 3rd seat**	32.2 cu. ft.
Cargo volume, maximum	135.6 cu. ft.
Height	70.
Width	74.
Track, front/rear	63.4/63.

FUNCTIONAL FEATURES

	VILLAGER	VILLAGER ESTATE	VILLAGER SPORT
Second Generation dual air bags***	STD	STD	STD
100,000-mile scheduled tune-up intervals†	STD	STD	STD
Front-wheel drive	STD	STD	STD
Brake/shift interlock	STD	STD	STD
Battery saver	STD	STD	STD
Childproof locks on sliding doors	STD	STD	STD
Flip-out 2nd- and 3rd-row bodyside windows	STD	STD	STD
Front side window defoggers	STD	STD	STD



FEATURES (CONTINUED)	VILLAGER	VILLAGER ESTATE	VILLAGER SPORT
Wipers, interval rear window wiper/washer	STD	STD	STD
Front 3-point lap/shoulder safety belts	STD	STD	STD
Shoulder safety belts for outboard passengers (with seat safety locking feature)	STD	STD	STD
Power windows	STD	STD	STD
Control with tap-up/tap-down feature	STD	STD	STD
Anti-Lock Brake System (ABS)	OPT	OPT	OPT
Power door locks	OPT	OPT	OPT
Package (includes P215/70R15 spare tire)	OPT	OPT	OPT
FEATURES	VILLAGER	ESTATE	SPORT
Reflector headlamps with front cornering lighting lamps	STD	STD	STD
Wipers front/rear	STD	STD	STD
Side marker lights	STD	STD	STD
Color-keyed bodyside moldings	OPT	STD	STD
Side mirrors	STD	STD	STD
Power windows	STD	STD	STD
Power door locks	STD	STD	STD
Power windows with illuminated controls and accessory delay	GRP	GRP	GRP
Power door locks with illuminated controls and central locking	GRP	GRP	GRP
Entry system with 2 key fobs	GRP	GRP	GRP
Tires	VILLAGER	ESTATE	SPORT
Standard sidewall all-season tires	STD		
Performance sidewall all-season tires		STD	STD

WHEELS AND TIRES (CONTINUED)	VILLAGER	VILLAGER ESTATE	VILLAGER SPORT
Full wheel covers	STD		
5-spoke aluminum wheels	OPT		
Deluxe aluminum wheels	OPT		
16" machined aluminum wheels with gold painted pockets		STD	
16" machined aluminum wheels			STD
INTERIOR COMFORT AND CONVENIENCE FEATURES	VILLAGER	ESTATE	SPORT
Front and rear floor mats with reversible cargo mat	STD	STD	STD
Glove box with lamp	STD	STD	STD
Entry assist handles	STD	STD	STD
Storage pull-out drawer in center stack	STD	STD	STD
Dual overhead visor mirrors	STD	STD	STD
Illuminated visor mirrors		STD	STD
Sliding doors with time delay step lamp	STD	STD	STD
Tilt steering column	STD	STD	STD
Third-row storage bin	STD	STD	STD
Rear power point plug (12 volt)	STD	STD	STD
Automatic on/delay off headlamps		STD	STD
Leather-wrapped steering wheel with audio controls		STD	STD
3-position parcel shelf with cargo net		STD	STD
Power front windows with illuminated controls and accessory delay	STD	STD	STD
Power door locks with illuminated controls and central locking	STD	STD	STD
Front CFC-free air conditioner	STD	STD	STD
Light Group includes front overhead dual map lights, front door step lamps, under-dash lamps with time delay and 2nd- and 3rd-row driver's side map lights	GRP	GRP	GRP
Rear air conditioner and audio controls	GRP	GRP	GRP



INTERIOR COMFORT AND CONVENIENCE (CONTINUED)	VILLAGER	VILLAGER ESTATE	VILLAGER SPORT
Cargo nets — front and rear	STD	STD	STD
Odor and Particulate Air-filtration System	GRP	GRP	GRP
TravelNote® with HomeLink® System		GRP	GRP
Smoker's Package includes 2 ashtrays and cigar lighter	OPT	OPT	OPT
Electronic automatic temperature control		OPT	OPT

SEATING FEATURES	VILLAGER	ESTATE	SPORT
Cloth reclining front captain's chairs with adjustable head restraints	STD	STD	STD
7-passenger seating — includes a quick release 2nd-row bench seat with a seatback that folds to a tray table and 3-passenger rear bench seat with In-Track system and two outboard head restraints	STD	OPT	OPT
7-passenger seating — includes two 2nd-row quick-release quad captain's chairs with rear seatbacks that fold down as tray tables, and 3-passenger rear bench seat with In-Track system and two outboard head restraints		STD	STD
Front passenger under-seat storage area	STD	STD	STD
Integrated child safety seats (2nd-row cloth bench seating only)	OPT	OPT	OPT
6-way power driver's seat with manual lumbar	GRP	GRP	GRP
Leather seating surfaces		GRP	GRP
4-way power passenger seat		GRP	GRP

INSTRUMENTATION	VILLAGER	ESTATE	SPORT
Analog instrument cluster with speedometer, tachometer, trip odometer, temperature and fuel gauges	STD	STD	STD
White-faced analog instrument gauges			STD
Electronic instrument cluster with digital speedometer, odometer, dual trip odometers, trip computer and outside temperature reading		OPT	OPT

AUDIO SYSTEMS	VILLAGER	VILLAGER SPORT
AM/FM stereo/cassette with 4 speakers	STD	STD
Premium AM/FM stereo with cassette and Premium Sound	OPT	OPT
Super Sound System AM/FM stereo/cassette/single CD player and /6-disc CD changer with Personal Audio System		OPT
6-disc CD changer (compatible with all audio systems)	OPT	OPT

COMFORT GROUP	OPT	OPT
Rear air conditioner and audio controls		
Odor and Particulate Air-filtration System		
Privacy glass™		
6-way power driver's seat with manual lumbar		

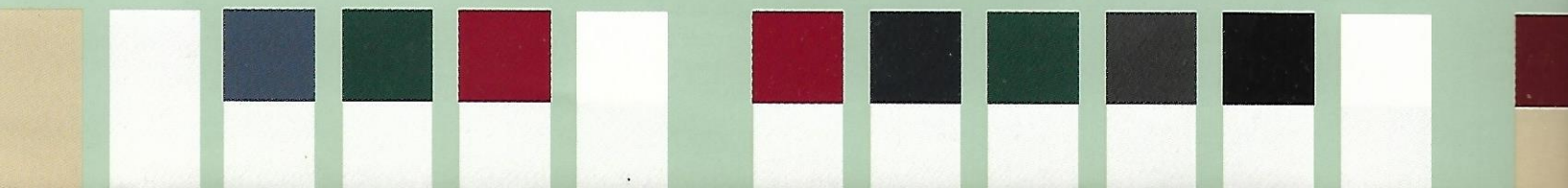
CONVENIENCE GROUP	OPT	OPT
Flip-open liftgate window		
Light Group		
Overhead Console†		
Power flip-out 3rd-row bodyside windows		
Remote Keyless Entry system with 2 key fobs		

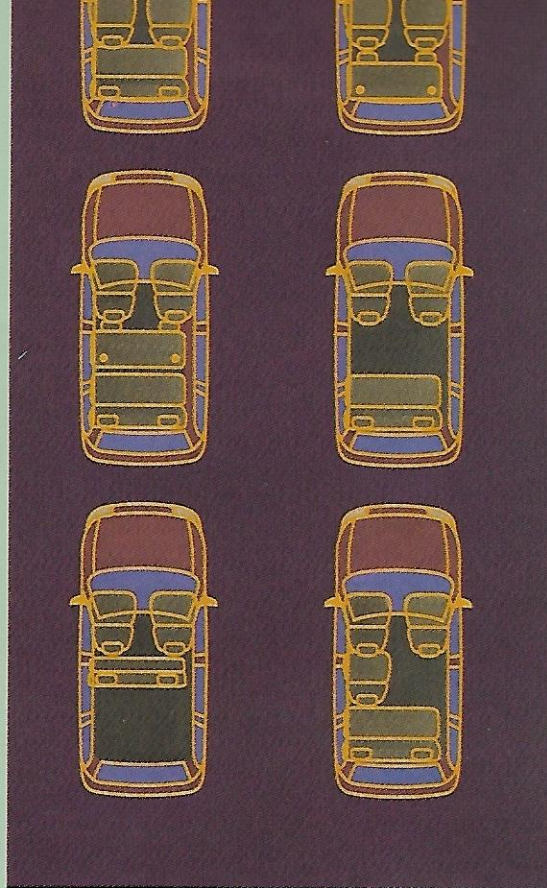
LUXURY GROUP	OPT	OPT
TravelNote with HomeLink System		
Leather seating surfaces		
Memory driver's seat and outside mirrors with auto exit assist		
4-way power passenger seat		

STD = Standard Feature; OPT = Optional Feature; GRP = Included in Option Group

Villager
 Harvest Gold Clearcoat Metallic
 Silver Clearcoat Metallic
 Graphite Blue Clearcoat Metallic/Silver Clearcoat Metallic
 Deep Jewel Green Clearcoat Metallic/Silver Clearcoat Metallic
 Toreador Red Clearcoat Metallic/Silver Clearcoat Metallic
 Oxford White Clearcoat Metallic

Villager Sport
 Toreador Red Clearcoat Metallic/Silver Clearcoat Metallic
 Deep Wedgewood Blue Clearcoat Metallic/Silver Clearcoat Metallic
 Deep Jewel Green Clearcoat Metallic/Silver Clearcoat Metallic
 Midnight Grey Clearcoat Metallic/Silver Clearcoat Metallic
 Black Clearcoat/Silver Clearcoat Metallic
 Oxford White Clearcoat/Silver Clearcoat Metallic





to accommodate just about anything
load bulky cargo — the rear seat slides
rails and locks into six different positions
the second row, then fold-up and slide
all the way forward for maximum cargo space.
Sport and Estate models offer up to 60
seat configurations.

Many dealer-installed accessories are available
so you can customize your Villager. For example,
a child step makes it easy to enter and exit
vehicle.



Ford Credit provides the convenience of one-stop shopping with a variety of simple to understand purchase or Red Carpet Lease programs available right at the dealership. For more information, ask your dealer for details, or visit us on the web at www.fordcredit.com.

For more information on Mercury vehicles via the Internet enter: www.mercuryvehicles.com.



A new floor console is available for extra
space. It includes two storage trays, an
compartment and more. An optional power
is available.



The seatback organizer slips over the headrest
has pockets for tissues, soda cans and more.
available as a factory-installed option is
and Particulate Air-filtration System.

PRODUCT CHANGES

Following publication of this brochure, certain changes in standard equipment, options, prices and the like, or product delays may have occurred which would not be included in these pages. Your Mercury dealer is your best source for up-to-date information. Lincoln Mercury reserves the right to change product specifications at any time without incurring obligations.

Options Availability: Options shown or described in this brochure are available at extra cost and may be offered only in combination with other options or subject to additional ordering requirements or limitations.

- *Not included.
- **With seat moved forward two seat positions.
- *** Always wear your safety belt and secure children in the rear seat.
- † Under normal driving conditions with routine fluid/filter changes.
- ‡ One compartment is deleted when available power moonroof is ordered.

†EPA estimates, 17 City/ 24 hwy. mpg

Deep Wedgewood Blue Clearcoat
Metallic/
Harvest Gold Clearcoat Metallic


Deep Jewel Green Clearcoat Metallic/
Harvest Gold Clearcoat Metallic

Black Clearcoat/
Harvest Gold Clearcoat Metallic

Oxford White Clearcoat/
Harvest Gold Clearcoat Metallic

These colors available as monotone on Villager only:
Toreador Red Clearcoat Metallic
Graphite Blue Clearcoat Metallic
Deep Jewel Green Clearcoat Metallic
Oxford White Clearcoat



 The Mercury Cycling Team is hitting the streets and will be participating in races from coast to coast. Look for this pro cycling team in your area.

Mercury CommitmentSM

a comprehensive program

dedicated to your complete satisfaction.

24 HOUR TOLL FREE ASSISTANCE

3 YEAR/50,000 MILE VEHICLE LIMITED WARRANTY

24 HOUR CUSTOMER ASSISTANCE CENTER

STRESS-FREE DELIVERY PROCESS

STRESS-FREE DELIVERY PROCESS

WHAT IS THE MERCURY COMMITMENT?

It's the extra comforts of ownership,

all provided in a comprehensive benefits

program. It is the assurance that meeting your

needs will always be our

primary objective.

Visit your dealer for complete details and a copy

of our limited warranty.

